

### Typical Features

- ◆ Wide input voltage range: 85-305VAC
- ◆ Ensure the power supply module to meet the requirement of CISPR22/EN55032 Class B for EMI
- ◆ Operating temperature: -40°C~+85°C
- ◆ Meet CE, RoHS certification standards
- ◆ Small size, Industrial grade design
- ◆ PCB Mounting



### Application Field

**LC-30W1D series**-----is a filter module provided by Aipu for customers, suitable for occasions sensitive to EMI noise. At the same time, it has a good suppression effect on surge. The maximum input voltage of the applied AC/DC module power supply should not be greater than the maximum working voltage of the filter, and the maximum input current should be less than the rated working current of the filter.

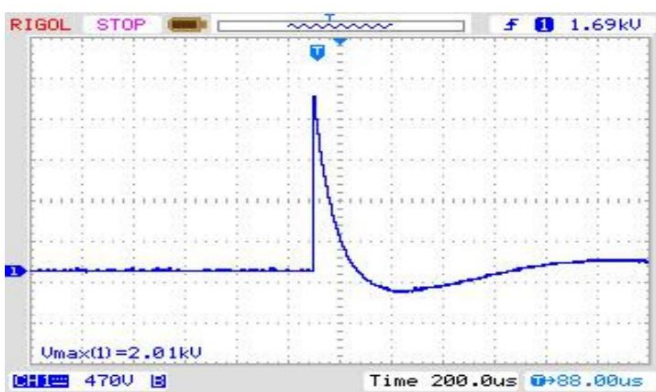
### Typical Product List

Part No	Input voltage Range(VAC)	Rated Current (mA @ MAX)
LC-30W1D-1	85~305	1.0
LC-30W1D-2	85~305	1.0

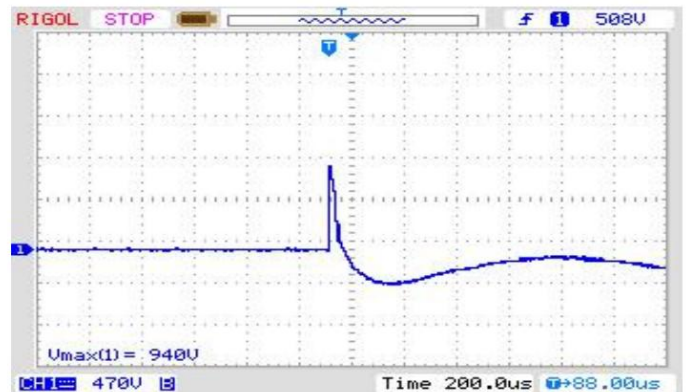
### Input Specification

Item	Operating Condition	Min.	Typ.	Max.	Unit
Operating Temperature	--	-40	--	85	°C
Storage Temperature	--	-55	--	125	
Case temperature rise during operation	220VAC@0.5A 220VAC@1.0A	--	--	6 22	
Insulation Voltage Input- Ground	Test 1 min, leakage current: 5mA	--	2000	-	VAC

### EMC Characteristic



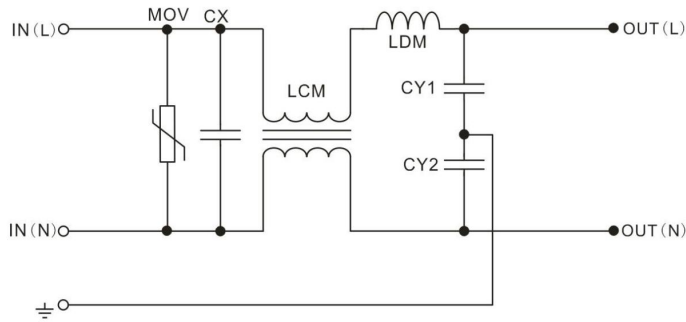
Input terminal voltage waveform  
(differential mode 2.01KV)



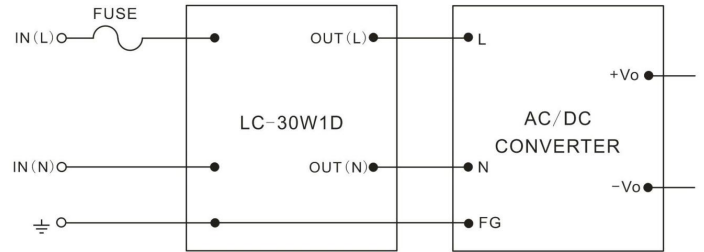
Output terminal voltage waveform  
(differential mode 0.94KV)

**Design Reference**

**1. Internal schematic**

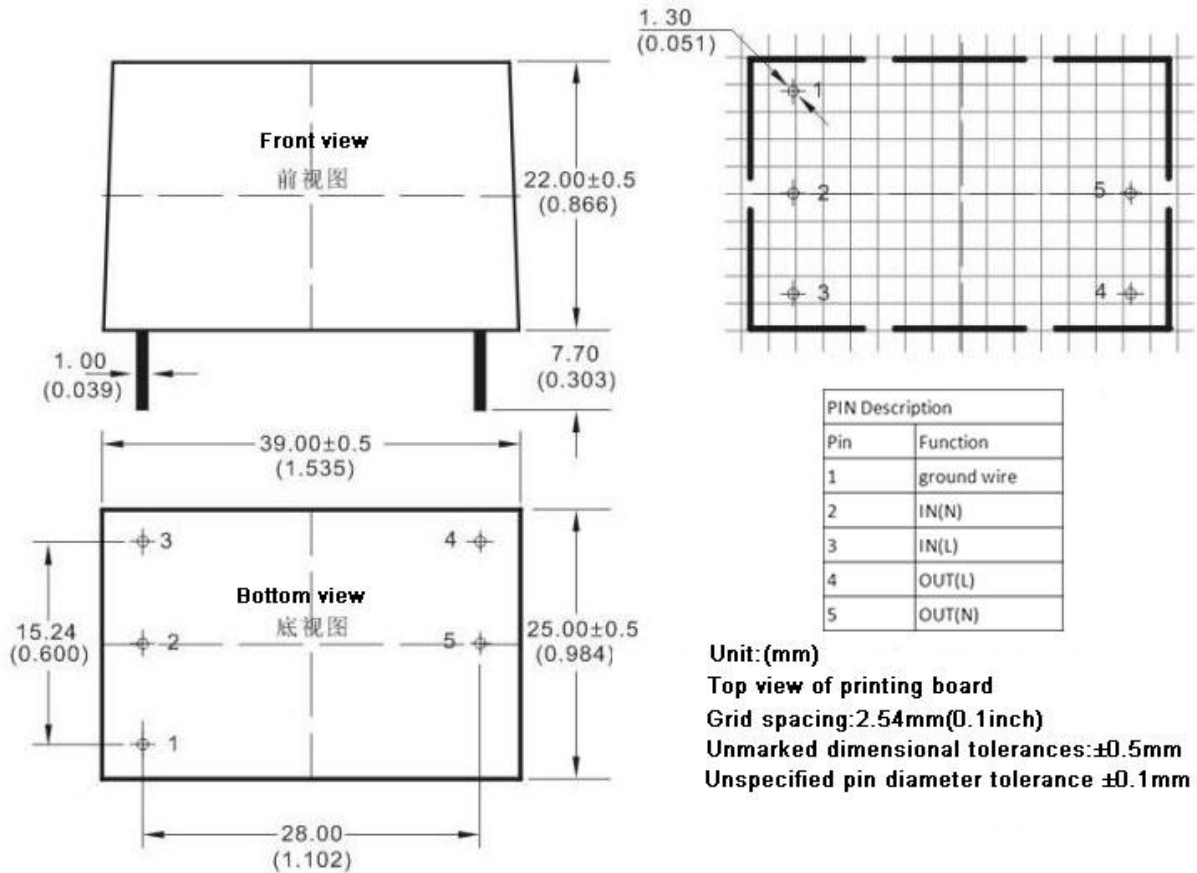


**2. Typical application circuit**

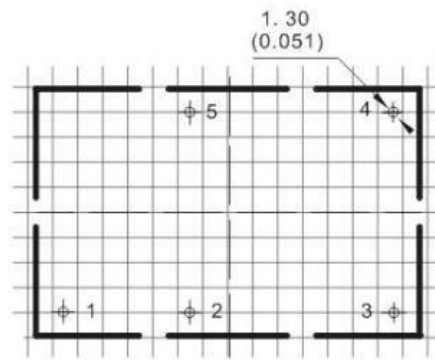
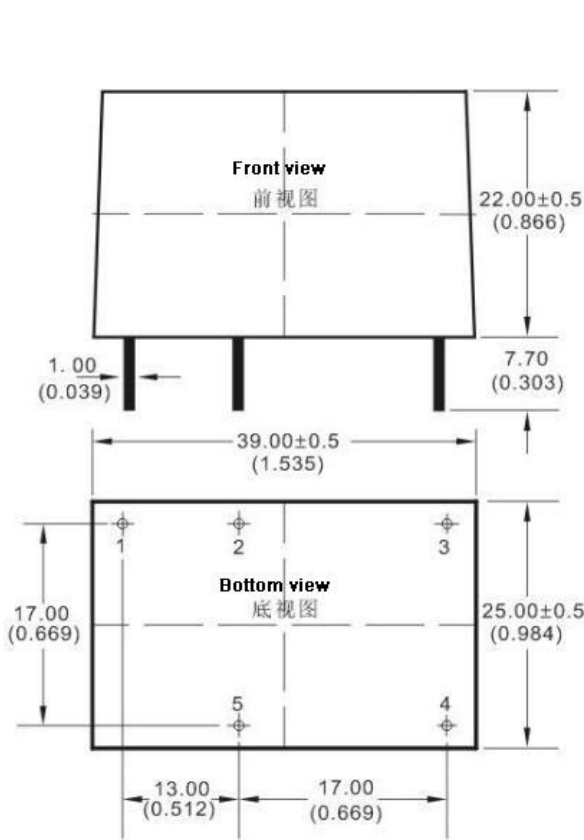


**Dimension**

**1. LC-30W1D-1 dimension, PCB board reference drawing**



2. LC-30W1D-2 dimension, PCB board reference drawing



PIN Description	
Pin	Function
1	ground wire
2	IN(N)
3	IN(L)
4	OUT(L)
5	OUT(N)

Unit : (mm)  
 Top view of printing board  
 Grid spacing: 2.54mm(0.1inch)  
 Unmarked dimensional tolerances: ±0.5mm  
 Unspecified pin diameter tolerance ±0.1mm

Packing Code	L x W x H	
D	39 X25 X22mm	1.535X0.984X0.866inch

**Guangzhou Aipu Electron Technology Co., Ltd**

Address: Building 4, HEDY Park, No.63, Punan Road, Huangpu Dist, Guangzhou, China.

Tel: 86-20-84206763 Fax: 86-20-84206762 HOTLINE: 400-889-8821

E-mail: sales@aipu-elec.com Website: <https://www.aipupower.com>